
2L

PARRY ANGUS



20TH ANNUAL

"Lotta Bull Sale"

MONDAY, MARCH 12, 2018 - 1:00 PM MDT - AT THE RANCH



Emily, Ransom, Ryan, and Paige Parry

Dear Cattlemen,

We would like to welcome you to the 20th Annual Parry Angus "Lotta Bull Sale". It seems like time just flies by. We feel truly blessed to be in this business. As a family run farm and ranch, there are a few things that are very dear to us. The most important is the opportunity to work with family on a daily basis. Another is the opportunity to cultivate relationships with customers that, in time, become more like friends. This, and getting to raise quality cattle, make life more rewarding.

We are very pleased to offer you this set of Angus and Sim-Angus bulls. It has been fun watching them grow from calves to where they are now. Each year seems to bring it's own set of challenges and rewards, but that is what keeps us constantly striving to improve. We hope you like what you see.

Please feel free to call or stop by the ranch at any time. We love the opportunity to take a break from work and talk cattle. We are so thankful for everyone who continues to support our program.

See you on Sale Day.

Take care,

The Parry's



Joanne, Paige, Steve, and Ransom Parry



PARRY ANGUS

Steve and Ryan Parry
21998 CR 46
Sterling, CO, 80751
Steve's Cell 970-520-6966
Ryan's Cell 970-520-6963

AUCTIONEER

Dave Mullins.....1-317-503-2798

LIVESTOCK PUBLICATION REPRESENTATIVES

Jim Geis, Western Livestock Journal.....1-970-590-0500
Kyle Schow, American Angus Association.....1-308-289-3772

TERMS AND CONDITIONS

The terms of the sale are cash and all settlements must be made at the close of the sale.

ANNOUNCEMENTS

All announcements from the auction block take precedence over the printed material.

HEALTH

All bulls have had a complete vaccination program, as well as vaccinations for pinkeye and footrot, and have been backpoured with Clean Up. Bulls have been given a complete soundness and fertility examination by Dr. Mike Coakley, DVM.
All bulls are AM, CA, and NH free by test or by pedigree.

VET AND ULTRASOUND

Vet - Dr. Mike Coakley, DVM.....1-970-522-2028
Ultrasound - Brian Frank.....1-970-218-0309

LIABILITY

Everyone attending the sale does so at their own risk and responsibility. The owner and employees of Parry Angus assume no liability, legal or otherwise, in the event of accident, bodily injury, or loss of property.

CATTLE VIEWING

The cattle may be viewed at Parry Angus any time before the sale. We appreciate if you call ahead, but visitors are always welcome. The bull's videos may also be viewed on-line at www.dvauction.com and/or at www.parryangus.com

HAULING

Parry Angus will deliver bulls up to 150 miles to central locations at no charge. Delivery will begin approximately April 1st.

CONTACT INFORMATION / SALE DAY PHONES

Home/Office.....1-970-522-1214
Steve Parry.....1-970-520-6966
Ryan Parry.....1-970-520-6963
Email.....parryangus@hotmail.com
Website.....www.parryangus.com

20th Annual

"Lotta Bull Sale"

Monday, March 12, 2018, 1:00 PM MDT

BULL WINTERING PROGRAM

If the buyer so desires, Parry Angus will care for and feed the bulls until April 1st at no charge. A feed charge of \$2.50 per head per day will apply after that date.

FERTILITY AND BREEDING SOUNDNESS GUARANTEE

All bulls sold by Parry Angus are guaranteed breeders at the time of turnout. Bulls believed to be non-breeders may be returned to seller at buyer's expense and another bull, if available, will be provided. If such bull is not suited or needed, Parry Angus will give the buyer full credit on next year's sale.

FIRST YEAR BREEDING SEASON GUARANTEE

All bulls selling for \$3000 or more will be covered by Parry Angus if they are injured during their first breeding season and are not able to return to service during that first breeding season. Breeding season is defined as the 90-day period following the first turn out of bulls. The value of the injured bull minus the salvage value will be split 50% by Parry Angus and the customer. This amount will be provided to the customer towards a replacement bull or as credit on the next year's sale for one bull only. Salvage value will be assumed at \$1500. Parry Angus does not cover mortality. All injuries must be diagnosed by a veterinarian. All claims must be made by September 1.

MORTALITY INSURANCE

Parry Angus does not cover mortality. Mortality is any injury that leads to the destruction of the bull without salvage value. To properly insure your investment, Jim Geis will be available to assist you with mortality insurance. (970) 590-0500

VOLUME DISCOUNTS

Customers who purchase 3 bulls will receive a 3% discount, 4 bulls a 4% discount, and 5 bulls or more a 5% discount. Customers who haul their bulls home on sale day will receive a \$50.00 discount.

FOOD AND REFRESHMENTS

A complimentary lunch will be served and refreshments will be provided starting at 11:00 on sale day.

VIEW AND BID LIVE

The sale will be broadcast live on-line at: www.dvauction.com. We recommend registering a minimum of 24 hours in advance. Video on the bulls is available on-line anytime.
Ty Groshans, DV Auctions.....1-970-818-6016

DVAuction
Broadcasting Real-Time Auctions

Watch & Bid online for FREE!

Can't make the sale?
Let DVAuction bring the sale to you!
Busy during the sale?
Let DVAuction represent your bid!

Visit www.dvauction.com and Register!
It's as easy as 1, 2, 3...

1. Create an account at www.dvauction.com under the "create new account" tab
2. Apply for bidding by clicking "apply for bidding" in the upper left corner of your screen, at least 24 hours prior to the auction
3. Tune into the sale and make your purchases!

For General Questions Please Contact Our Office:
(402) 316-5460 or support@dvauction.com

*High Speed Internet Access Required

ANGUS



Barstow Cash

Sitz upward 307R
Sitz Dash 10277
Sitz Everelda Entense 2665

SAV Final Answer 0035
Barstow Queen W16
RCA Queen R42

CED	BW	WW	YW	SC	Milk	\$EN	Marb	RE	\$W	\$B
12	+0.6	63	124	1.53	17	-4.31	0.19	0.95	52.81	115.09

Cash delivers eye appeal, muscle, and performance with elite calving-ease genetics. He is built powerfully from the ground up, with a massive spread and dimension of muscling in his top and quarter, plus tremendous depth of body and spring of rib.

ANGUS



Styles Cash R400

Sitz Dash
Barstow Cash
Barstow Queen W16

Bon View New Design 1407
Plainview Lassie 71B
Plainview Lassie 92X

CED	BW	WW	YW	SC	Milk	\$EN	Marb	RE	\$W	\$B
-4	+3.9	65	125	0.91	19	-6.88	0.64	0.77	48.41	162.8

Styles Cash R400 is one of the most exciting Barstow Cash sons ever born. His Dam is the famous curve bending donor for Styles, SD. He was the 2014 Reserve Champion at the NWSS and his progeny exhibit exceptional structure and style.

ANGUS



PA Full Power 1208

GAR Predestined
PA Power Tool 9108
Shamrocks Beebee Queen 3095

GAR New Design 5050
Pine View SQR Rita W091
Pine View Rita R084

CED	BW	WW	YW	SC	Milk	\$EN	Marb	RE	\$W	\$B
3	+0.6	62	112	0.94	25	-7.98	1.12	0.76	66.25	149.61

Full Power sires fault-free, broody, functional females with excellent udder quality. His progeny have exceptional growth and power with incredible end product merit. Few Angus sires can match him for his breed leading Docility and combination of growth, REA and MARB.

ANGUS



VAR Upfront

Connealy Onward
Sitz Upward 307R
Sitz Henrietta Pride 81M

Rito 112 of 2536 Rito 616
EXAR New Design 4212
GAR New Design 1200

CED	BW	WW	YW	SC	Milk	\$EN	Marb	RE	\$W	\$B
11	+0.0	65	118	0.16	25	-17.59	0.59	0.85	62.1	145.42

Upfront is a calving ease sire that offers superior phenotype and exceptional performance. His progeny are wide based, deep bodied and massive and they push the scales at weaning time.

ANGUS



AAR Ten X 7008 S A

SAF Focus of ER
Mytty In Focus
Mytty Countess 906

SAV Adaptor 2213
AAR Lady Kelton 5551
H S A F Lady Kelton 504B

CED	BW	WW	YW	SC	Milk	\$EN	Marb	RE	\$W	\$B
9	+0.7	64	123	1.16	23	-1.35	0.92	0.63	71.11	160.79

Ten X is a proven calving ease sire with superior performance, carcass merit and \$ values that has stood the test of time. He is the #1 sire in the Angus breed for registrations in 2015 and 2016 and his progeny have been high selling lots in sales across the country.

ANGUS



VAR Discovery 2240

Mytty In Focus
AAR Ten X 7008 S A
AAR Lady Kelton 5551

Sitz Upward 307R
Deer Valley Rita 0308
GAR Objective 2345

CED	BW	WW	YW	SC	Milk	\$EN	Marb	RE	\$W	\$B
5	+1.6	74	144	1.92	27	-25.88	1.10	0.72	69.43	164.46

Discovery is a rare package of moderate birth, extreme growth and elite carcass genetics. no other proven sire can match his combination of \$W and \$B. His sons are muscular and masculine and his daughters are feminine and broody.

ANGUS



E7 Commando 1366

Basin Franchise P142
EF Complement 8088
EF Everelda Entense 6117

B/R Ambush 28
Riverbend Young Lucy W1470
Riverbend Young Lucy T1080

CED	BW	WW	YW	SC	Milk	\$EN	Marb	RE	\$W	\$B
14	-0.8	58	97	-0.06	28	-9.52	0.86	0.77	67.42	115.34

A no-miss calving ease sire, Commando throws moderate framed cattle that are consistent in their type and kind. His progeny are very expressive in their muscle shape and have a great look from the side.

ANGUS



Connealy Comrade

Connealy Consensus
Connealy Consensus 7229
Blue Lilly of Conanga 16

GAR New Design 5050
Happy Gee of Conanga 919
Hap Gee of Conanga 260 4965

CED	BW	WW	YW	SC	Milk	\$EN	Marb	RE	\$W	\$B
17	-3.5	46	91	0.26	28	9.75	0.55	0.62	70.67	96.57

Comrade consistently sires low birth, attractive cattle that grow rapidly and is a high docility sire who ranks at the top of the Angus breed for marbling. His first daughters in production have nice udders and are quickly labeled "the keeping kind".

ANGUS



Vin-Mar O'Reilly Factor

Sitz Traveler 8180
Sav Final Answer 0035
SAV Emulous 8145

Circle A 216 LTD 9374
Vin-Mar Edella 2827
RR Edella Pursuit 5827

CED	BW	WW	YW	SC	Milk	\$EN	Marb	RE	\$W	\$B
8	+0.5	56	109	0.44	27	-13.33	0.24	0.42	56.28	137.15

O'Reilly Factor was one of the most phenotypically imposing bulls shown at the 2011 NWSS that combined calving ease with extraordinary growth. Many cattlemen admired the extra bone, body style, fleshing ability and muscle shape that he possesses.

ANGUS



SAC Conversation

BT Crossover 758N
Silveiras Conversion 8064
EXG Saras Dream S609 R3

SAV 004 Predominant 4438
Lafins Farrah 0252
lafins Farrah 7215

CED	BW	WW	YW	SC	Milk	\$EN	Marb	RE	\$W	\$B
3	+1.5	42	80	1.44	28	-3.18	0.48	0.78	45.12	103.24

Conversation is as solid as any sire in terms of his EPD line-up, but it is his phenotype that is the most exciting. Not only does he balance up well from the side, but he is also a rugged built bull with real skeletal width and muscle.

SIMMENTAL



CCR Boulder 1339A

Syden CC & 7
Hoover Dam
Erica Of Ellston C124

Triple C L. Taylor
CCR Ms L Taylor 1339Y
CCR 0135 Star 7103T

CED	BW	WW	YW	Doc	Milk	Stay	Marb	RE	API	TI
20.0	-3.4	56.1	96.6	14.1	26.8	15.0	0.94	0.76	188.0	89.0

Homozygous Black, Homozygous Polled. 50% Angus. Boulder is a moderate framed, big ribbed stud with loads of muscle and shape. He sires calving ease and progeny display his good looks and deep flank.

SIMMENTAL



MCM Top Grade

Ellingson Legacy M229
MR NLC Upgrade U8676
Ms NLC Mojo S6119 B

MCM Marbler 307N
MCM 513R
MCM 210M

CED	BW	WW	YW	Doc	Milk	Stay	Marb	RE	API	TI
8.2	-0.9	57.9	94.8	10.2	26.3	7.0	0.66	1.11	137.5	78.1

Homozygous Black, Homozygous Polled. 25% Angus. Top Grade is moderate in his birth weight and calving ease, but with excellent growth and top ranking carcass merit traits. He is known for the extra eye appeal he will add to his progeny.

SIMMENTAL



Hooks Yellowstone 97Y

Hooks Shear Force 38K
Hooks Taurus 24T
Hooks Peaches 48-P

SRS J914 Preferred Beef
Hooks Sheyenne 77S
Triple C Tears P02C

CED	BW	WW	YW	Doc	Milk	Stay	Marb	RE	API	TI
15.4	-0.5	70.9	102.7	11.6	26.0	18.3	0.38	0.98	158.9	83.0

Homozygous Black, Homozygous Polled, 100% Simmental. Yellowstone was the high selling black bull from the Hook Farms 2012 offering. He sires wonderful structure, great profile, balance, and thickness. He has become the go-to bull for calving ease and multi-trait strength.

SIMMENTAL



GLS Integrate

Ellingson Legacy M229
MR NLC Upgrade U8676
MS NLC Mojo S6119 B

HSF Better Than Ever
GLS Miss BTE W149
GLS/GTF T13

CED	BW	WW	YW	Doc	Milk	Stay	Marb	RE	API	TI
9.0	1.9	93.3	166.3	12.4	21.2	2.4	0.17	1.29	123.3	89.2

Homozygous Black, Homozygous Polled, 100% Simmental. Integrate will add muscle, shape and performance to his progeny. He started out at a modest 83 pounds and weaned at nearly 900 pounds. He was the lead off bull of the Grand Champion Pen-Of-Three at the National Western Stock Show.



Directions

Parry Angus is located about 9 miles north of Sterling, CO at 21998 CR 46, Sterling, CO 80751. It is also 1 mile South and 1 mile east of Padroni, CO or about 4 miles east of Iliff, CO.

From Sterling:

Take CO Highway 138 north out of Sterling and cross the railroad tracks. Continue on Hwy 138 northeast about 6 miles. Turn north (left) onto CO Highway 113 towards Peetz/Sidney. Go 2 miles. Turn west (left) onto County Road 46. Go 2 miles and look for Parry Angus sign. Directions where to turn close to the sale will be marked.

From Sidney, NE:

Take Highway 113 south towards Sterling, CO. Go about 24 miles. Turn west (right) onto County Road 46. Go 2 miles. Look for Parry Angus sign. Directions close to the sale will be marked.

From I-76 and Iliff, CO:

Take the Iliff Exit 134. Go 3.6 miles north on Hwy 55. Turn west (left) onto CO Highway 138 and go 3.6 miles. Turn north (right) onto CO Highway 113 towards Peetz/Sidney and go 2 miles. Turn west (left) onto County Road 46 and go 2 miles. Look for Parry Angus sign. Directions close to the sale will be marked.

WATCH AND BID ON-LINE ~

Of Course, we would like to have you in attendance at our sale, but we understand that sometimes, life is just too busy. If you are unable to attend the sale in person, we have arranged for absentee bidding. DVAuctions® has taken video of the bulls and that video is available at www.parryangus.com as well as at www.dvauction.com.

If you are unable to attend, visit the DVAuction® website and create a new account under the "create an account" tab. Then apply for a bidding by clicking the "apply for bidding" icon in the upper left corner of the screen. Please do so at least 24 hours in advance. We also encourage you to drop by any time and see the bulls for yourself. We will help in any way we can to help you pick out the right bull. You may also leave a bid with any of the livestock publication representatives listed on the previous page.

This sale will be broadcast live on the internet.

DVAuction

Broadcasting Real-Time Auctions

Real time bidding & proxy bidding available.



The following table gives Breed Average EPD's for non-parent bulls according to the 2017 spring sire summary from the American Angus Association.

Production										Maternal				Carcass				\$ Values				
CED	BW	WW	YW	RADG	DMI	YH	SC	Doc	HP	CEM	Milk	MW	MH	\$EN	CW	Marb	RE	Fat	\$W	\$F	\$G	\$B
+6	+1.2	+48	+85	+21	+19	+5	+77	+14	+11.1	+8	+24	+27	+3	-4.18	+33	+56	+51	+020	43.34	39.20	31.86	105.91

PRODUCTION EPDs

Calving Ease Direct (CED), is expressed as a difference in percentage of unassisted births, with a higher value indicating greater calving ease in first-calf heifers. It predicts the average difference in ease with which a sire's calves will be born when he is bred to first-calf heifers.

Birth Weight EPD (BW), expressed in pounds, is a predictor of a sire's ability to transmit birth weight to his progeny compared to that of other sires.

Weaning Weight EPD (WW), expressed in pounds, is a predictor of a sire's ability to transmit weaning growth to his progeny compared to that of other sires.

Yearling Weight EPD (YW), expressed in pounds, is a predictor of a sire's ability to transmit yearling growth to his progeny compared to that of other sires.

Scrotal Circumference EPD (SC), expressed in centimeters, is a predictor of the difference in transmitting ability for scrotal size compared to that of other sires.

Dockility (Doc), is expressed as a difference in yearling cattle temperament, with a higher value indicating more favorable dockility. It predicts the average difference of progeny from a sire in comparison with another sire's calves. In herds where temperament problems are not an issue, this expected difference would not be realized.

MATERNAL EPDs

Maternal Milk EPD (Milk), is a predictor of a sire's genetic merit for milk and mothering ability as expressed in his daughters compared to daughters of other sires. In other words, it is that part of a calf's weaning weight attributed to milk and mothering ability.

Cow Energy Value (\$EN), expressed in dollar savings per cow per year, assesses differences in cow energy requirements as an expected dollar savings difference in daughters of sires. A larger value is more favorable when comparing two animals (more dollars saved on feed energy expenses). Components for computing the cow \$EN savings difference include lactation energy requirements and energy costs associated with differences in mature cow size.

CARCASS EPDs

Marbling EPD (Marb), expressed as a fraction of the difference in USDA marbling score of a sire's progeny compared to progeny of other sires.

Ribeye Area EPD (RE), expressed in square inches, is a predictor of the difference in ribeye area of a sire's progeny compared to progeny of other sires.

\$VALUE INDEXES

\$Value indexes are multi-trait selection indexes, expressed in dollars per head, to assist beef producers by adding simplicity to genetic selection decisions. The \$Value is an estimate of how future progeny of each sire are expected to perform, on average, compared to progeny of other sires in the database if the sires were randomly mated to cows and if calves were exposed to the same environment. [More Info](#)

Weaned Calf Value (\$W), an index value expressed in dollars per head, is the expected average difference in future progeny performance for preweaning merit. \$W includes both revenue and cost adjustments associated with differences in birth weight, weaning direct growth, maternal milk and mature cow size.

Feedlot Value (\$F), an index value expressed in dollars per head, is the expected average difference in future progeny performance for postweaning merit compared to progeny of other sires.

Grid Value (\$G), an index value expressed in dollars per head, is the expected average difference in future progeny performance for carcass grid merit compared to progeny of other sires.

•Quality Grade (\$QG) \$QG represents the quality grade segment of the economic advantage found in \$G. \$QG is intended for the specialized user wanting to place more emphasis on improving quality grade. The carcass marbling (Marb) EPD contributes to \$QG.

•Yield Grade (\$YG) \$YG represents the yield grade segment of the economic advantage found in \$G. \$YG is intended for the specialized user wanting to place more emphasis on red meat yield. It provides a multi-trait approach to encompass ribeye, fat thickness and weight into an economic value for red meat yield.

Beef Value (\$B), an index value expressed in dollars per head, is the expected average difference in future progeny performance for postweaning and carcass value compared to progeny of other sires.



LOT 1



Barstow Cash

REF SIRE BARSTOW CASH

DOB: 1/28/2011 REG: 17145326 TAG: Y18 TATTOO: Y18

Act BW 64
Adj WW 708
Adj YW 1420

SITZ UPWARD 307R
SITZ DASH 10277
SITZ EVERELDA ENTENSE 2665
SAV FINAL ANSWER 0035
BARSTOW QUEEN W16
RCA QUEEN R42

CED	BW	WW	YW	SC	Milk	\$EN	Marb	RE	\$W	\$B
12	+0.6	63	124	1.53	17	-4.31	0.19	0.95	52.81	115.09

Cash delivers eye appeal, muscle, and performance with elite calving-ease genetics. He is built powerfully from the ground up, with a massive spread and dimension of muscling in his top and quarter, plus tremendous depth of body and spring of rib.



Lot 1

1 PAR CASH 7P39

DOB: 01/22/17 REG: 18979215 TAG: 134 TATTOO: 7P39

Act BW	85
Adj WW	700
Adj YW	1228



SITZ DASH 10277
BARSTOW CASH
BARSTOW QUEEN W16
MYTTY IN FOCUS
PAR LADY IN FOCUS 36F-134
SCHMAUS EXAMPLE 36F

CED	BW	WW	YW	SC	Milk	\$EN	Marb	RE	\$W	\$B
11	0.1	56	104	1.31	23	-9.29	0.40	0.62	51.76	119.04

CALVING EASE This is a big bodied, stout made Cash son that is athletic and exhibits balance and eye appeal. He posts excellent growth figures and scanned a 13.8 REA. He comes from an outstanding cow family.

LOT 2



2 PAR CASH 7P51

DOB: 01/26/17 REG: 18979223 TAG: 919 TATTOO: 7P51

Act BW	80
Adj WW	721
Adj YW	1243

SITZ DASH 10277
BARSTOW CASH
BARSTOW QUEEN W16



S A V FINAL ANSWER 0035
PAR SUSAN -419-FA-919
PAR SUSAN 662-878

CED	BW	WW	YW	SC	Milk	\$EN	Marb	RE	\$W	\$B
11	0.3	60	105	1.42	24	-11.3	0.27	0.70	57.95	102.27

CALVING EASE This big ribbed, easy keeping Cash son is truly a meat and potatoes kind of bull. A complete package of calving ease and growth and an outstanding cross of Cash and Final Answer. Can't miss here!

4 PAR CASH 7P41

DOB: 01/23/17 REG: 18979217 TAG: 138 TATTOO: 7P41

Act BW	93
Adj WW	666
Adj YW	1172

SITZ DASH 10277
BARSTOW CASH
BARSTOW QUEEN W16



CONNEALY DANNY BOY
PAR EDELLA DANNY 611-138
PAR EDELLA 414-BVND878 611

CED	BW	WW	YW	SC	Milk	\$EN	Marb	RE	\$W	\$B
6	2.3	57	106	1.25	21	-8.15	0.36	0.71	44.91	112.69

This is a long bodied, big ribbed bull that posts excellent growth numbers and a high \$B. His pathfinder Danny Boy dam stems back to a fantastic Donor cow that came from Minert Angus in Nebraska.

3 PAR CASH 7P16

DOB: 01/15/17 REG: 18979200 TAG: 117 TATTOO: 7P16

Act BW	72
Adj WW	682
Adj YW	1183

SITZ DASH 10277
BARSTOW CASH
BARSTOW QUEEN W16



SYDGEN C C & 7
PAR EMILLY C C & 7 -117
PAR EMILLY BLACKMAID 878-734

CED	BW	WW	YW	SC	Milk	\$EN	Marb	RE	\$W	\$B
15	-2.2	49	94	1.05	24	-7.08	0.40	0.66	48.64	106.32

CALVING EASE This is an absolute can't miss calving ease Cash son that is out on an excellent cow that produced a \$6000 bull that sold to Bob Facchinello in our 2016 sale. He is big ribbed, easy keeping and powerful.

5 PAR CASH 7P12

DOB: 01/13/17 REG: 18979198 TAG: 144 TATTOO: 7P12

Act BW	66
Adj WW	638
Adj YW	1132

SITZ DASH 10277
BARSTOW CASH
BARSTOW QUEEN W16



B C LOOKOUT 7024
PAR PRINCESS LOOKOUT 738-144
PAR PRINCESS MIF-738

CED	BW	WW	YW	SC	Milk	\$EN	Marb	RE	\$W	\$B
15	-2.5	50	90	1.18	18	2.11	0.27	0.56	45.82	74.62

CALVING EASE This is an absolute calving ease dream. Cash crossed with Lookout. Expect him to be more moderate framed and powerful.



LOT 6

6 PAR CASH 7P65

DOB: 02/01/17 REG: 18979235 TAG: 222 TATTOO: 7P65

Act BW	85
Adj WW	663
Adj YW	1297

SITZ DASH 10277
BARSTOW CASH
BARSTOW QUEEN W16



S A V FINAL ANSWER 0035
PAR SUSAN B 343-FA 222
PAR SUSAN B 343-R 416-045

CED	BW	WW	YW	SC	Milk	\$EN	Marb	RE	\$W	\$B
9	1.4	61	119	0.99	21	-12.9	0.32	0.69	49.21	123.54

CALVING EASE This Cash son is big bodied, high performing and exceptionally stylish. He is an absolute powerhouse along with calving ease. He is out of an outstanding Final Answer daughter.

8 PAR CASH-7P28

DOB: 01/17/17 REG: 18979206 TAG: 323 TATTOO: 7P28

Act BW	99
Adj WW	658
Adj YW	1285

SITZ DASH 10277
BARSTOW CASH
BARSTOW QUEEN W16



HOOVER DAM
PAR LUCKY GIRL 119-HD-323
PAR LUCKY MAINLINE 935-119

CED	BW	WW	YW	SC	Milk	\$EN	Marb	RE	\$W	\$B
3	3.4	64	126	1.24	18	-12.25	0.33	0.81	40.85	130.82

This big bodied, athletic, high performing bull is one of my favorites. He grew like a weed and has an outstanding set of numbers. He is out of an awesome Hoover Dam daughter.

7 PAR SPOT CASH 7P62

DOB: 01/30/17 REG: 18979233 TAG: 153 TATTOO: 7P62

Act BW	91
Adj WW	697
Adj YW	1308

SITZ DASH 10277
BARSTOW CASH
BARSTOW QUEEN W16



CONNEALY LEAD ON
PAR PATSY LEAD ON 560-153
PAR PATSY ND1407 36F-560

CED	BW	WW	YW	SC	Milk	\$EN	Marb	RE	\$W	\$B
5	2.5	63	123	1.26	23	-17.51	0.39	0.73	48.80	133.07

This is an interesting cross of Cash and Lead On. Lead On's have been fantastic cows and the cross produced awesome growth and performance. A powerful bull from a powerful cow family and a pathfinder Lead On dam.

9 PAR CASH 7P74

DOB: 02/12/17 REG: 18979238 TAG: 357 TATTOO: 7P74

Act BW	72
Adj WW	652
Adj YW	1169

SITZ DASH 10277
BARSTOW CASH
BARSTOW QUEEN W16



WOODHILL MAINLINE
PAR TEGAN 129-MAINLINE-357
PAR TEGAN FA 955-129

CED	BW	WW	YW	SC	Milk	\$EN	Marb	RE	\$W	\$B
13	-1.4	60	109	1.1	19	-7.46	0.08	0.86	52.64	107.78

CALVING EASE This is an easy keeping, big ribbed Cash son. He is out of a good young Mainline dam and comes as a calving ease package.

10 PAR CASH 7P26

DOB: 01/17/17 REG: 18979204 TAG: 002 TATTOO: 7P26

Act BW	82
Adj WW	723
Adj YW	1176

SITZ DASH 10277
BARSTOW CASH
BARSTOW QUEEN W16



S A V FINAL ANSWER 0035
PAR BARB 860-FA-002
PAR BARB 006 -106B-860

CED	BW	WW	YW	SC	Milk	\$EN	Marb	RE	\$W	\$B
13	-1.0	58	99	1.17	20	-3.73	0.37	0.65	55.06	105.19

CALVING EASE This Cash son is out of an excellent Final Answer dam and is big ribbed, easy fleshing and stout made. There is lots of growth and muscle in this calving ease package.

DAM OF LOT 10



11 PAR CASH 7P54

DOB: 01/26/17 REG: 18979225 TAG: 412 TATTOO: 7P54

Act BW	78
Adj WW	712
Adj YW	1240

SITZ DASH 10277
BARSTOW CASH
BARSTOW QUEEN W16



CONNEALY FINAL PRODUCT
PAR SUSAN 924-FNLP-412
PAR SUSAN 004-854E-924

CED	BW	WW	YW	SC	Milk	\$EN	Marb	RE	\$W	\$B
10	-0.3	61	111		20	-11.65	0.08	0.50	50.74	85.28

CALVING EASE This is an excellent curve bender Cash son out of a fantastic Final Product dam. Just look at the numbers and you can't miss this thick made, well balanced bull.

12 PAR CASH 7P75

DOB: 02/13/17 REG: 18979239 TAG: 518 TATTOO: 7P75

Act BW	74
Adj WW	707
Adj YW	1190

SITZ DASH 10277
BARSTOW CASH
BARSTOW QUEEN W16



CONNEALY COMBINATION 0188
PAR PROUD COMBO-744-518
PAR PROUD TRAVELER 004-744

CED	BW	WW	YW	SC	Milk	\$EN	Marb	RE	\$W	\$B
9	0.4	61	108	1.57	21	-8.95	0.16	0.64	54.73	106.26

CALVING EASE This long bodied, nice profiling Cash son is sure-fire calving ease. A cross of Combination and Cash should produce excellent females.

Styles Cash R400



REF SIRE STYLES CASH R400

DOB: 3/23/2013 REG: 17571309 TAG: R400 TATTOO: R400

Act BW	90
Adj WW	719
Adj YW	1393

SITZ DASH
BARSTOW CASH
BARSTOW QUEEN W16
BON VIEW NEW DESIGN 1407
PLAINVIEW LASSIE 71B
PLAINVIEW LASSIE 92X

CED	BW	WW	YW	SC	Milk	\$EN	Marb	RE	\$W	\$B
-4	+3.9	65	125	0.91	19	-6.88	0.64	0.77	48.41	162.8

Styles Cash R400 is one of the most exciting Barstow Cash sons ever born. His Dam is the famous curve bending donor for Styles, SD. He was the 2014 Reserve Champion at the NWSS and his progeny exhibit exceptional structure and style.

13 PAR CASH R400 7P56

DOB: 01/28/17 REG: 18979227 TAG: 348 TATTOO: 7P56

Act BW	101
Adj WW	704
Adj YW	1254

BARSTOW CASH
STYLES CASH R400
PLAINVIEW LASSIE 71B



HOOVER DAM
PAR QUEEN729-HD-348
PAR EMBLAZON QUEEN-729

CED	BW	WW	YW	SC	Milk	\$EN	Marb	RE	\$W	\$B
-6	5.1	65	119		21	-16.46	0.29	0.42	39.05	112.83

LOT 13





LOT 14

14 PAR CASH R400 7P60

DOB: 01/29/17 REG: 18979231 TAG: 462 TATTOO: 7P60

Act BW	80
Adj WW	643
Adj YW	1115

BARSTOW CASH
STYLES CASH R400
PLAINVIEW LASSIE 71B



S A V PIONEER 7301
PAR PRIDE 832-PIONEER-462
PAR PRIDE-401-410-832

CED	BW	WW	YW	SC	Milk	\$EN	Marb	RE	\$W	\$B
4	1.1	50	92	0.8	22	-4.12	0.50	0.67	43.69	106.15

This is a growthy, stylish, athletic Style's Cash son out of an exciting young Pioneer daughter. She comes from an excellent cow family and Pioneer daughters have a lot of style and good udders.

16 PAR CASH R400 7P67

DOB: 02/03/17 REG: 18979236 TAG: 562 TATTOO: 7P67

Act BW	102
Adj WW	736
Adj YW	1275

BARSTOW CASH
STYLES CASH R400
PLAINVIEW LASSIE 71B



PA POWER TOOL 9108
PAR EDELLA PT-926-562
PAR EDELLA -408-EXT-926

CED	BW	WW	YW	SC	Milk	\$EN	Marb	RE	\$W	\$B
-2	4.9	60	116	0.6	25	-15.41	0.66	0.57	42.44	148.43

This is a high performing, stout made Style's Cash son. Just look at the growth numbers on this guy. He posts excellent EPD's for performance and a high \$B.

15 PAR CASH R400 7P10

DOB: 01/13/17 REG: 18979196 TAG: 538 TATTOO: 7P10

Act BW	78
Adj WW	770
Adj YW	1215

BARSTOW CASH
STYLES CASH R400
PLAINVIEW LASSIE 71B



CONNEALY CAPITALIST 028
PAR MAY BELLE CAP-822-533
PAR MAY BELLE-1108-410-822

CED	BW	WW	YW	SC	Milk	\$EN	Marb	RE	\$W	\$B
4	1.8	67	112	0.94	18	-6.97	0.55	0.46	56.12	120.43

I am so close to calling this long bodied, thick ended Style's Cash son a calving ease bull, but I won't. He is very impressive to look at and has lots of growth.



Ryan and Ransom checkin' out the cows.

PA Full Power 1208



REF SIRE PA FULL POWER 1208

DOB: 2/14/2011 REG: 16981588 TAG: 1208 TATTOO: 1208

Act BW 78
Adj WW 823
Adj YW 1314

GAR PREDESTINED
PA POWER TOOL 9108
SHAMROCKS BEEBEE QUEEN 3095
GAR NEW DESIGN 5050
PINE VIEW SQR RITA W091
PINE VIEW RITA R084

CED	BW	WW	YW	SC	Milk	\$EN	Marb	RE	\$W	\$B
3	+0.6	62	112	0.94	25	-7.98	1.12	0.76	66.25	149.61

Full Power sires fault-free, broody, functional females with excellent udder quality. His progeny have exceptional growth and power with incredible end product merit. Few Angus sires can match him for his breed leading Docility and combination of growth, REA and MARB.

LOT 17



17 PAR FULL POWER 7P30

DOB: 01/18/17 REG: 18979208 TAG: 121 TATTOO: 7P30

Act BW	90
Adj WW	707
Adj YW	1224

PA POWER TOOL 9108
PA FULL POWER 1208
PINE VIEW SQR RITA W091



CONNEALY IMPRESSION
PAR BARBARA IMPRESS 819-121
PAR BARBARA-006-1407-819

CED	BW	WW	YW	SC	Milk	\$EN	Marb	RE	\$W	\$B
6	1.2	61	105	0.76	24	-10.23	0.81	0.85	59.16	130.06

This Full Power son is all about growth and muscle. Look at the adjusted weights and 15.4 REA. He is out of a fantastic Impression dam and has awesome carcass numbers. I like this dam's calves every single year.

18 PAR FULL POWER 7P34

DOB: 01/19/17 REG: 18979210 TAG: 236 TATTOO: 7P34

Act BW	87
Adj WW	627
Adj YW	1144

PA POWER TOOL 9108
PA FULL POWER 1208
PINE VIEW SQR RITA W091



CONNEALY FRONT PAGE 0228
PAR PRIDE 832-FP-236
PAR PRIDE-401-410-832

CED	BW	WW	YW	SC	Milk	\$EN	Marb	RE	\$W	\$B
5	0.6	50	90	0.3	23	-3.57	0.73	0.53	47.35	107.00

This is a stylish, big hipped, athletic Full Power son. He has good growth and is out of an attractive Front Page daughter.

19 PAR FULL POWER 7P45

DOB: 01/24/17 REG: 18979220 TAG: 309 TATTOO: 7P45

Act BW	83
Adj WW	728
Adj YW	1267

PA POWER TOOL 9108
PA FULL POWER 1208
PINE VIEW SQR RITA W091
S A V FINAL ANSWER 0035
PAR EDELLA 309
PAR EDELLA DANNY 611-138

CED	BW	WW	YW	SC	Milk	\$EN	Marb	RE	\$W	\$B
8	-0.1	62	108	1.26	25	-12.78	0.87	0.62	62.46	142.68

CALVING EASE You can't be much more satisfied with the way a mating turned out than this. Full Power crosses with Final Answer pretty darn well. This is a big hip, performance oriented bull that still offers calving ease. He is out of an outstanding pathfinder dam. I really like him.

20 PAR FULL POWER 7P55

DOB: 01/28/17 REG: 18979226 TAG: 406 TATTOO: 7P55

Act BW	72
Adj WW	682
Adj YW	1154

PA POWER TOOL 9108
PA FULL POWER 1208
PINE VIEW SQR RITA W091
VIN-MAR O'REILLY FACTOR
PAR PRIDE 202-O'REILLY 406
PAR PRIDE 425-MAINLINE-202

CED	BW	WW	YW	SC	Milk	\$EN	Marb	RE	\$W	\$B
10	-1.3	55	96		25	-11.42	0.67	0.46	54.71	92.51

CALVING EASE This is a big ribbed, stout Full Power son that puts a foot on each corner and yet offers calving ease. This O'Reilly Factor dam seems to do it every year. Check out his outstanding carcass scan data.



DAM OF LOT 19

21 PAR FULL POWER 7P09

DOB: 01/12/17 REG: 18979195 TAG: 516 TATTOO: 7P09

Act BW	89
Adj WW	698
Adj YW	1242

PA POWER TOOL 9108
PA FULL POWER 1208
PINE VIEW SQR RITA W091
BENFIELD SUBSTANCE 8506
PAR SUBSTANCE-516
SCHMAUS RITO 58F

CED	BW	WW	YW	SC	Milk	\$EN	Marb	RE	\$W	\$B
1	2.4	55	103	0.4	26	-13.13	0.62	0.56	48.03	123.22

There is a big hip and stifle in this Full Power son. He offers fantastic growth and a high \$B. His dam comes from a well-proven cow family.

VAR Upfront



REF SIRE VAR UPFRONT

DOB: 11/4/2010 REG: 16798964 TAG: 392 TATTOO: 392

Act BW	84
Adj WW	875
Adj YW	1486

CONNEALY ONWARD
SITZ UPWARD 307R
SITZ HENRIETTA PRIDE 81M
RITO 112 OF 2536 RITO 616
EXAR NEW DESIGN 4212
GAR NEW DESIGN 1200

CED	BW	WW	YW	SC	Milk	\$EN	Marb	RE	\$W	\$B
11	+0.0	65	118	0.16	25	-17.59	0.59	0.85	62.1	145.42

Upfront is a calving ease sire that offers superior phenotype and exceptional performance. His progeny are wide based, deep bodied and massive and they push the scales at weaning time.

22 PAR UPFRONT 7P43

DOB: 01/23/17 REG: 18979218 TAG: 038 TATTOO: 7P43

Act BW	80
Adj WW	716
Adj YW	1206

SITZ UPWARD 307R
V A R UPFRONT 0392
EXAR NEW DESIGN 4212
MORGANS DIRECTION 111 9901
PAR RITO 58F-MD-038
SCHMAUS RITO 58F

CED	BW	WW	YW	SC	Milk	\$EN	Marb	RE	\$W	\$B
12	-1.4	51	94	-0.29	31	-17.4	0.56	0.66	56.24	137.89

CALVING EASE You can't put one together much better than this Upfront son. Athletic, thick, sound made and excellent growth all in a calving ease package. His dam produced a \$7500 bull that sold to Breidenbach Brothers in our 2015 sale. This is one complete bull. Don't miss him just because I didn't get his picture.

23 PAR UPFRONT 7P78

DOB: 02/15/17 REG: 18979241 TAG: 418 TATTOO: 7P78

Act BW	86
Adj WW	740
Adj YW	1273

SITZ UPWARD 307R
V A R UPFRONT 0392
EXAR NEW DESIGN 4212
VIN-MAR O'REILLY FACTOR
PAR S BLACKMAID 507-OF-418
PAR S BLACKMAID 96-RT-507

CED	BW	WW	YW	SC	Milk	\$EN	Marb	RE	\$W	\$B
6	1.5	63	113		27	-21.47	0.27	0.43	57.28	109.44

This Upfront son is pure growth and power. He is big hip and super stout and has excellent numbers for adjusted weaning and yearling. He is sound made, travels well and is out of a promising young O'Reilly Factor dam.



1-970-535-2153

A big thanks to Dr. Kelcey Swyers and Grassland Nutrition. She does a fantastic job keeping the bulls on schedule and growing right. She also does a great job putting up with us. She offers wonderful customer service and personal attention to our specific concerns. Thank you Kelcey.



24 PAR UPFRONT 7P58

DOB: 01/29/17 REG: 18979229 TAG: 473 TATTOO: 7P58

Act BW	67
Adj WW	665
Adj YW	1227

SITZ UPWARD 307R
V A R UPFRONT 0392
EXAR NEW DESIGN 4212



D R SIERRA CUT 7404
PAR SUSAN BLACK 850-SC-473
PAR SUSAN BLACK 106-MD-850

CED	BW	WW	YW	SC	Milk	\$EN	Marb	RE	\$W	\$B
10	-0.6	57	107	0.1	24	-13	0.69	0.75	52.94	128.65

CALVING EASE This is a big bodied, stylish and attractive Upfront son. He has a nice low birthweight to complement explosive growth.



LOT 27

27 PAR UPFRONT-7P35

DOB: 01/19/17 REG: 18979211 TAG: 961 TATTOO: 7P35

Act BW	89
Adj WW	641
Adj YW	1246

SITZ UPWARD 307R
V A R UPFRONT 0392
EXAR NEW DESIGN 4212



RITO 616 OF 4B20 6807
PAR SUSAN H-623-616-961
SUSAN HODGES 96

CED	BW	WW	YW	SC	Milk	\$EN	Marb	RE	\$W	\$B
3	2.0	54	102	0.46	25	-11.98	0.49	0.67	46.65	134.63

Excellent yearling growth and performance are what this Upfront son is all about. He goes back to an outstanding cow family that came from Ken Hodges when we were just getting started and is big bodied and athletic.

25 PAR UPFRONT 7P14

DOB: 01/13/17 REG: 18979199 TAG: 515 TATTOO: 7P14

Act BW	81
Adj WW	658
Adj YW	1247

SITZ UPWARD 307R
V A R UPFRONT 0392
EXAR NEW DESIGN 4212



WOODHILL MAINLINE
PAR EDELLA 260-MAINLINE-515
PAR EDELLA 422-IRON MTN-260

CED	BW	WW	YW	SC	Milk	\$EN	Marb	RE	\$W	\$B
7	1.2	63	115		19	-12.19	0.33	0.49	48.61	97.70

CALVING EASE This low birthweight Upfront son is athletic in his build and very stylish. He comes from a good young Mainline cow, has excellent yearling growth and scanned a 13.2 REA.

26 PAR UPFRONT 7P11

DOB: 01/13/17 REG: 18979197 TAG: 577 TATTOO: 7P11

Act BW	77
Adj WW	765
Adj YW	1266

SITZ UPWARD 307R
V A R UPFRONT 0392
EXAR NEW DESIGN 4212



CONNEALY CAPITALIST 028
PAR PATSY 338-CAPITALIST-577
PAR PATSY 937-FP-338

CED	BW	WW	YW	SC	Milk	\$EN	Marb	RE	\$W	\$B
11	0.2	73	124	0.37	27	-23.76	0.52	0.62	72.41	135.97

CALVING EASE This is a very athletically made and structurally sound Upfront son that has lots of rib and muscle. He has outstanding adjusted weights and is out of a promising Capitalist daughter.

28 PAR UPFRONT 7P24

DOB: 01/17/17 REG: 18979203 TAG: 955 TATTOO: 7P24

Act BW	81
Adj WW	659
Adj YW	1181

SITZ UPWARD 307R
V A R UPFRONT 0392
EXAR NEW DESIGN 4212



G A R RETAIL PRODUCT
PAR TEGAN-231-RP-955
PAR FAME SUSAN 231

CED	BW	WW	YW	SC	Milk	\$EN	Marb	RE	\$W	\$B
7	0.8	54	95	0.74	25	-10.05	0.47	0.66	51.39	118.02

CALVING EASE This is a real meat and potatoes kind of bull in a calving ease package. His Retail Product dam comes from PAR Fame Susan 231 who was an excellent dam in our herd for many years.



REF SIRE AAR TEN X 7008 S A

DOB: 2/9/2007 REG: 15719841 TAG: 7008 TATTOO: 7008

Act BW 78
Adj WW 755
Adj YW 1344

SAF FOCUS OF ER
MYTTY IN FOCUS
MYTTY COUNTESS 906
SAV ADAPTOR 2213
AAR LADY KELTON 5551
H S A F LADY KELTON 504B

CED	BW	WW	YW	SC	Milk	\$EN	Marb	RE	\$W	\$B
9	+0.7	64	123	1.16	23	-1.35	0.92	0.63	71.11	160.79

Ten X is a proven calving ease sire with superior performance, carcass merit and \$ values that has stood the test of time. He is the #1 sire in the Angus breed for registrations in 2015 and 2016 and his progeny have been high selling lots in sales across the country.



LOT 29

29 PAR TEN X 7P71

DOB: 02/06/17 REG: 18979237 TAG: 031 TATTOO: 7P71

Act BW	85
Adj WW	688
Adj YW	1250

MYTTY IN FOCUS
A A R TEN X 7008 S A
A A R LADY KELTON 5551



B C LOOKOUT 7024
PAR TAYLOR 713-LOOKOUT -031
PAR TAYLOR BLACKMAID-542-713

CED	BW	WW	YW	SC	Milk	\$EN	Marb	RE	\$W	\$B
6	1.4	54	101	0.97	25	-11.5	0.75	0.58	48.99	138.56

This is a big ribbed, muscular 10X son that should be more moderate framed. His outstanding Lookout dam produced a \$6000 son that sold to Equus Farms in our 2016 sale and a \$5500 son that sold to Toyne's in our 2015 sale.

30 PAR TEN X-7P40

DOB: 01/22/17 REG: 18979216 TAG: 730 TATTOO: 7P40

Act BW	83
Adj WW	635
Adj YW	1208

MYTTY IN FOCUS
A A R TEN X 7008 S A
A A R LADY KELTON 5551



BON VIEW NEW DESIGN 1407
PAR MAY BELLE 1407-730
PAR MAY BELLE 002

CED	BW	WW	YW	SC	Milk	\$EN	Marb	RE	\$W	\$B
7	0.9	48	93	0.59	27	-11.33	0.86	0.45	45.15	117.74

CALVING EASE This is a growthy, high performing 10X son that comes in a calving ease package and offers excellent carcass merit.

LOT 31



31 PAR TEN X 7P20

DOB: 01/16/17 REG: 18979202 TAG: 215 TATTOO: 7P20

Act BW	91
Adj WW	681
Adj YW	1326

MYTTY IN FOCUS
A A R TEN X 7008 S A
A A R LADY KELTON 5551



S A V FINAL ANSWER 0035
PAR SUSAN 105-FA 215
PAR SUSAN 105 NI 4480-335

CED	BW	WW	YW	SC	Milk	\$EN	Marb	RE	\$W	\$B
7	1.2	59	117	1.14	25	-17.67	0.78	0.32	50.91	147.00

This is one of my favorite bulls in the sale. Lots of growth, muscle, volume and thickness in this 10X son. His dam produced a \$7000 bull that sold to Schaal Cattle Company in our 2017 sale and a \$6500 bull that sold to Hendrix Ranch in our 2016 sale.



LOT 33

32 PAR TEN X 7P49

DOB: 01/26/17 REG: 18979222 TAG: 731 TATTOO: 7P49

Act BW	89
Adj WW	712
Adj YW	1285

MYTTY IN FOCUS
A A R TEN X 7008 S A
A A R LADY KELTON 5551



SITZ ALLIANCE 6595
PAR EDELLA'S ALLIANCE-731
PAR EDELLA-B 598-414

CED	BW	WW	YW	SC	Milk	\$EN	Marb	RE	\$W	\$B
5	1.4	60	114	1.57	24	-15.09	0.67	0.48	52.42	143.57

This is a big topped, stout and athletic made 10X son that posts great adjusted weights and scanned a 13.8 REA. His 6595 dam produced a \$8500 bull that sold to Schaal Cattle Company in our 2015 sale and a \$7000 bull that sold to Equus Farms in our 2016 sale.

33 PAR TEN X 7P05

DOB: 01/10/17 REG: 18979193 TAG: 431 TATTOO: 7P05

Act BW	83
Adj WW	686
Adj YW	1353

MYTTY IN FOCUS
A A R TEN X 7008 S A
A A R LADY KELTON 5551



D R SIERRA CUT 7404
PAR LADY ESTON 112-SC-431
PAR LADY ESTON 824-TCF-112

CED	BW	WW	YW	SC	Milk	\$EN	Marb	RE	\$W	\$B
7	1.6	70	136	0.68	22	-21.82	0.86	0.54	55.87	160.42

CALVING EASE It is all about rib, muscle and performance in this 10X son. His Sierra Cut dam comes from an outstanding cow family.



VAR Discovery

REF SIRE VAR DISCOVERY 2240

DOB: 3/6/2012 REG: 17262835 TAG: 2240 TATTOO: 2240

Act BW 78
Adj WW 788
Adj YW 1310

MYTTY IN FOCUS
AAR TEN X 7008 S A
AAR LADY KELTON 5551
SITZ UPWARD 307R
DEER VALLEY RITA 0308
GAR OBJECTIVE 2345

CED	BW	WW	YW	SC	Milk	\$EN	Marb	RE	\$W	\$B
5	+1.6	74	144	1.92	27	-25.88	1.10	0.72	69.43	164.46

Discovery is a rare package of moderate birth, extreme growth and elite carcass genetics. no other proven sire can match his combination of \$W and \$B. His sons are muscular and masculine and his daughters are feminine and broody.



LOT 34

34 PAR DISCOVERY 7P36

DOB: 01/19/17 REG: 18979212 TAG: 429 TATTOO: 7P36

Act BW	87
Adj WW	764
Adj YW	1369

A A R TEN X 7008 S A
V A R DISCOVERY 2240
DEER VALLEY RITA 0308



D R SIERRA CUT 7404
PAR GRETCHEN 702-SC-429
PAR GRETCHEN BVND 1407-702

CED	BW	WW	YW	SC	Milk	\$EN	Marb	RE	\$W	\$B
4	1.6	73	138	0.88	27	-28.53	0.88	0.65	65.24	160.45

This Discovery son is one of my favorites. Excellent type and kind with plenty of muscle, volume and balance. His dam is quickly getting noticed in our herd.

35 PAR DISCOVERY 7P48

DOB: 01/25/17 REG: 18979221 TAG: 722 TATTOO: 7P48

Act BW	90
Adj WW	677
Adj YW	1194

A A R TEN X 7008 S A
V A R DISCOVERY 2240
DEER VALLEY RITA 0308



BON VIEW NEW DESIGN 1407
PAR MZ BLACKCAP 99Z-1407-722
BLACKCAP HUSKER 99Z

CED	BW	WW	YW	SC	Milk	\$EN	Marb	RE	\$W	\$B
4	1.6	53	99	0.69	24	-9.82	1.03	0.59	46.26	128.90

This is a long bodied, growth oriented bull with an outstanding %IMF of 5.16. If you are retaining ownership of calves to the rail, he would be an excellent choice. His dam comes from a powerful cow family.

LOT 36



36 PAR DISCOVERY 7P29

DOB: 01/18/17 REG: 18979207 TAG: 371 TATTOO: 7P29

Act BW	84
Adj WW	722
Adj YW	1288

A A R TEN X 7008 S A
V A R DISCOVERY 2240
DEER VALLEY RITA 0308



HOOVER DAM
PAR BARBARA 121-HD-371
PAR BARBARA IMPRESS 819-121

CED	BW	WW	YW	SC	Milk	\$EN	Marb	RE	\$W	\$B
9	0.7	69	126	1.33	25	-20.58	0.70	0.81	64.19	148.14

CALVING EASE This is an outstanding Discovery son out of a great Hoover Dam cow that produced a \$6000 bull that sold to Manuello Inc. in our 2016 sale. Fantastic growth numbers in a calving ease package and a 14.5 REA.

37 PAR DISCOVERY 7P53

DOB: 01/26/17 REG: 18979224 TAG: 860 TATTOO: 7P53

Act BW	84
Adj WW	647
Adj YW	1247

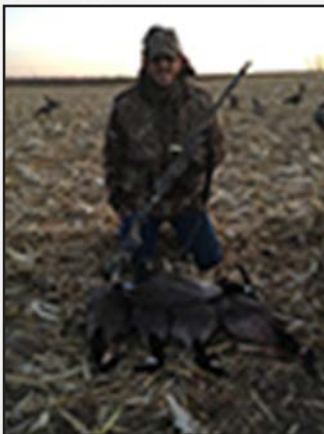
A A R TEN X 7008 S A
V A R DISCOVERY 2240
DEER VALLEY RITA 0308



PAR BVND 878- 5P03
PAR BARB 006 -106B-860
PAR BARBARA 006

CED	BW	WW	YW	SC	Milk	\$EN	Marb	RE	\$W	\$B
6	1.3	53	103	1.19	24	-11.32	0.80	0.40	45.47	130.65

CALVING EASE This is a growthy, muscular, high performing Discovery son that posts really good adjusted growth numbers.



A big thanks to Dalton Kent. He has become more than just a hired man. He is a also a friend and a hunting partner. We have grown to trust his opinion nearly as much as our own, especially when it comes to the cows. Thanks again buddy. We couldn't do it without you.





EF Commando

REF SIRE EF COMMANDO 1366

DOB: 8/25/2011 REG: 17082311 TAG: 1366 TATTOO: 1366

Act BW 60
Adj WW 673
Adj YW 991

BASIN FRANCHISE P142
EF COMPLEMENT 8088
EF EVERELDA ENTENSE 6117
B/R AMBUSH 28
RIVERBEND YOUNG LUCY W1470
RIVERBEND YOUNG LUCY T1080

CED	BW	WW	YW	SC	Milk	\$EN	Marb	RE	\$W	\$B
14	-0.8	58	97	-0.06	28	-9.52	0.86	0.77	67.42	115.34

A no-miss calving ease sire, Commando throws moderate framed cattle that are consistent in their type and kind. His progeny are very expressive in their muscle shape and have a great look from the side.



LOT 38

38 PAR COMMANDO 7P00

DOB: 01/03/17 REG: 18987875 TAG: 445 TATTOO: 7P00

Act BW 80
Adj WW 649
Adj YW 1182

EF COMPLEMENT 8088
EF COMMANDO 1366
RIVERBEND YOUNG LUCY W1470
D R SIERRA CUT 7404
PAR BLACKCAP 423-SC-445
PAR BLACKCAP -RT-423

CED	BW	WW	YW	SC	Milk	\$EN	Marb	RE	\$W	\$B
7	1.1	53	95		27	-13.59	0.47	0.38	50.38	70.75

CALVING EASE This Commando son is long bodied and gives you a nice look from the side. He is a nice package of growth and calving ease and his dam is out of the impressive PAR Blackcap RT 423 cow.

39 PAR COMMANDO 7P42

DOB: 01/23/17 REG: 18987899 TAG: 152 TATTOO: 7P42

Act BW 99
Adj WW 722
Adj YW 1228

EF COMPLEMENT 8088
EF COMMANDO 1366
RIVERBEND YOUNG LUCY W1470



CONNELLY LEAD ON
PAR MC SUSAN LO 426-152
PAR MC SUSAN -RT-426

CED	BW	WW	YW	SC	Milk	\$EN	Marb	RE	\$W	\$B
2	2.8	59	99	0.13	30	-16.4	0.57	0.46	58.67	117.75

This Commando son is deep ribbed, high performing and muscular. He has impressive adjusted growth weights. His pathfinder Lead On dam seems to raise a great one each year.

41 PAR COMMANDO 7P70

DOB: 02/04/17 REG: 18987865 TAG: 575 TATTOO: 7P70

Act BW 79
Adj WW 723
Adj YW 1201

EF COMPLEMENT 8088
EF COMMANDO 1366
RIVERBEND YOUNG LUCY W1470



D R SIERRA CUT 7404
PAR SUSAN H-SC-961-575
PAR SUSAN H-623-616-961

CED	BW	WW	YW	SC	Milk	\$EN	Marb	RE	\$W	\$B
4	1.2	57	98	0.13	30	-14.69	0.73	0.57	62.17	113.17

CALVING EASE This is a more moderate framed, thick ended, big ribbed version of a Commando son. Lots of growth in a calving ease package.

40 PAR COMMANDO 7P23

DOB: 01/17/17 REG: 18987881 TAG: 303 TATTOO: 7P23

Act BW 79
Adj WW 733
Adj YW 1239

EF COMPLEMENT 8088
EF COMMANDO 1366
RIVERBEND YOUNG LUCY W1470
CONNELLY FINAL PRODUCT
PAR PROUD 744-FNLP-303
PAR PROUD TRAVELER 004-744

CED	BW	WW	YW	SC	Milk	\$EN	Marb	RE	\$W	\$B
8	0.4	65	108	0.44	27	-16.31	0.39	0.65	67.34	108.34

CALVING EASE Pure performance, growth and muscle in this Commando son. Excellent adjusted growth weights along with low birth weight and calving ease. His dam is proving to be a fantastic Final Product cow.

Bull Feeding-

At Parry Angus, we strive to feed our bulls to best maximize genetic expression without compromising practicality. That's just another way of saying we feed the bulls just hard enough to look good and grow without having them fall apart when they go to work for you.

It is always a concern of ours to feed enough to allow the bulls to perform to their potential, but we understand that many producers are concerned about how the bulls will do once they are taken off feed. As a result, we will not push the bulls too hard and once the sale is over, the bulls are slowly backed off feed to a ration that will firm them up and prepare them to go to work.

Connealy Comrade



REF SIRE CONNEALY COMRADE

DOB: 2/2/2011 REG: 17031465 TAG: 1385 TATTOO: 1385

Act BW 74
Adj WW 816
Adj YW 1419

CONNEALY CONSENSUS
CONNEALY CONSENSUS 7229
BLUE LILLY OF CONANGA 16
GAR NEW DESIGN 5050
HAPPY GEE OF CONANGA 919
HAP GEE OF CONANGA 260 4965

CED	BW	WW	YW	SC	Milk	\$EN	Marb	RE	\$W	\$B
17	-3.5	46	91	0.26	28	9.75	0.55	0.62	70.67	96.57

Comrade consistently sires low birth, attractive cattle that grow rapidly and is a high docility sire who ranks at the top of the Angus breed for marbling. His first daughters in production have nice udders and are quickly labeled "the keeping kind".

42 PAR COMRADE 7P61

DOB: 01/30/17 REG: 18979232 TAG: 432 TATTOO: 7P61

Act BW 84
Adj WW 673
Adj YW 1195

CONNEALY CONSENSUS 7229
CONNEALY COMRADE 1385
HAPPY GEE OF CONANGA 919



TC FRANKLIN 619
PAR EDELLA 138-TCF-432
PAR EDELLA DANNY 611-138

CED	BW	WW	YW	SC	Milk	\$EN	Marb	RE	\$W	\$B
12	-0.5	54	99	0.5	26	-10.79	0.64	0.43	54.93	111.93

CALVING EASE This is a moderate framed, easy keeping, deep ribbed Comrade son. He is out of an impressive Franklin dam and offers sure-fire calving ease.

43 PAR COMRADE-7P57

DOB: 01/29/17 REG: 18979228 TAG: 243 TATTOO: 7P57

Act BW 91
Adj WW 634
Adj YW 1184

CONNEALY CONSENSUS 7229
CONNEALY COMRADE 1385
HAPPY GEE OF CONANGA 919



S A V IRON MOUNTAIN 8066
PAR LORI 517- IRON MTN-243
PAR LORI BANDO 598 964-517

CED	BW	WW	YW	SC	Milk	\$EN	Marb	RE	\$W	\$B
6	1.4	51	95	0.47	22	-4.08	0.32	0.48	44.82	95.79

This is a big ribbed, stout made, moderate framed Comrade son with an excellent disposition. He is out of a powerful Iron Mountain dam.

44 PAR COMRADE 7P01

DOB: 01/06/17 REG: 18985128 TAG: 520A TATTOO: 7P01

Act BW 59
Adj WW 695
Adj YW 1268

CONNEALY CONSENSUS 7229
CONNEALY COMRADE 1385
HAPPY GEE OF CONANGA 919



SOO LINE MOTIVE 9016
PAR SUSAN B 329-SLM-520
PAR MAINLINE-329

CED	BW	WW	YW	SC	Milk	\$EN	Marb	RE	\$W	\$B
9	0.2	55	106	0.05	29	-8.65	0.46	0.60	64.43	121.37

CALVING EASE This bull is a twin to Lot 45. There is plenty of rib and thickness in this easy keeping, low birth weight Comrade son and he scanned a 13.5 REA.



Branding time! Steve, Ryan and Emily.



We operate the Cecil's family owned cow/calf and yearling operation at Cope, Colorado. Our ranch has been purchasing Parry Angus Bulls for 15 years. Our operation runs 350 mother cows, weans the calves in the fall, retains ownership and sells the steers at a later date to a local feedyard.

The heifers are developed to be sold as reputation bred heifers with a strong emphasis on maternal traits with a quiet disposition.

Thanks to the Parry family for their commitment to raising seed stock with the genetics to be profitable in today's cattle industry


~ Jim and Vickie Cecil



45 PAR COMRADE 7P02

DOB: 01/06/17 REG: 18985129 TAG: 520B TATTOO: 7P02

Act BW	58
Adj WW	725
Adj YW	1269

CONNEALY CONSENSUS 7229
CONNEALY COMRADE 1385
HAPPY GEE OF CONANGA 919
 SOO LINE MOTIVE 9016
PAR SUSAN B 329-SLM-520
PAR MAINLINE-329


CED	BW	WW	YW	SC	Milk	\$EN	Marb	RE	\$W	\$B
9	0.2	55	106	0.05	29	-8.65	0.57	0.56	64.43	129.68

CALVING EASE This bull is a twin to Lot 44. They are both packed full of rib shape and muscle. Look at his impressive curvebender growth spread.

46 PAR COMRADE 7P08

DOB: 01/11/17 REG: 18979194 TAG: 547 TATTOO: 7P08

Act BW	74
Adj WW	677
Adj YW	1266

CONNEALY CONSENSUS 7229
CONNEALY COMRADE 1385
HAPPY GEE OF CONANGA 919
 D R SIERRA CUT 7404
PAR PRIDE 425-SIERRA CUT-547
PAR PRIDE ADVANTAGE-425

CED	BW	WW	YW	SC	Milk	\$EN	Marb	RE	\$W	\$B
9	-0.1	49	99		27	-15.32	0.30	0.33	44.26	71.06

CALVING EASE This Comrade son has lots of rib and thickness in a calving ease package. Plenty of yearling growth and his dam comes from the impressive PAR Pride Advantage 425 donor dam.

47 PAR COMRADE 7P44

DOB: 01/23/17 REG: 18979219 TAG: 744 TATTOO: 7P44

Act BW	78
Adj WW	654
Adj YW	1148

CONNEALY CONSENSUS 7229
CONNEALY COMRADE 1385
HAPPY GEE OF CONANGA 919
 S A V 8180 TRAVELER 004
PAR PROUD TRAVELER 004-744
PAR PRIDE ADVANTAGE-425

CED	BW	WW	YW	SC	Milk	\$EN	Marb	RE	\$W	\$B
11	-0.6	48	89	0.83	27	-8.41	0.32	0.38	50.36	84.32

CALVING EASE This is a high performing, big ribbed, stout made Comrade son that provides excellent calving ease. His outstanding pathfinder dam produced a \$8750 bull that sold to Schaal Cattle Company in our 2015 sale.



Schreiber Ranch, operated by Gerald and Kay Schreiber family, is a third generation outfit running 250 Angus based commercial cows at Last Chance, CO. Our cows run on native short grass prairie and expired CRP planted grass. Since we do not raise feed, we continue to try to develop our cow herd to work in our harsh environment. The catch .22 is that we sell calves on the video that have to work in the feedlot as calf feds.

We have bought several bulls over the years from Parry Angus. Their early calving allows us to get good coverage from their yearling bulls. We have been able to find bloodlines that will work for developing females and as calf feds for our feeder buyers. Parry's do a great job providing information on their bulls.

We are active in R-CALF USA and Colorado Independant Cattle Growers Association and feel very strongly that our good American beef should be labeled so our customers can differentiate our superior quality beef and our superior production protocols.

Respectfully,

~Gerald and Kay Schreiber, Schreiber Ranch

Vin-Mar O'Reilly Factor



REF VIN-MAR O'REILLY FACTOR

SIRE DOB: 2/5/2009 REG: 16400429 TAG: 9563 TATTOO: 9563
 SITZ TRAVELER 8180
 SAV FINAL ANSWER 0035
 SAV EMULOUS 8145
 CIRCLE A 216 LTD 9374
 VIN-MAR EDELLA 2827
 RR EDELLA PURSUIT 5827

CED	BW	WW	YW	SC	Milk	\$EN	Marb	RE	\$W	\$B
8	+0.5	56	109	0.44	27	-13.33	0.24	0.42	56.28	137.15


O'Reilly Factor was one of the most phenotypically imposing bulls shown at the 2011 NWSS that combined calving ease with extraordinary growth. Many cattlemen admired the extra bone, body style, fleshing ability and muscle shape that he possesses.



LOT 48

48 PAR O'REILLY FACTOR-7P04

DOB: 01/08/17 REG: 18979192 TAG: 561 TATTOO: 7P04


S A V FINAL ANSWER 0035
 VIN-MAR O'REILLY FACTOR
 VIN-MAR EDELLA 2827

 CONNEALY BLACK GRANITE
 PAR S BLACKMAID-BG-561
 PAR S BLACKMAID-705-4480-817

CED	BW	WW	YW	SC	Milk	\$EN	Marb	RE	\$W	\$B
13	-1.6	42	76	1.05	25	-2.14	0.35	0.26	44.03	94.50

CALVING EASE This O'Reilly Factor son is deep ribbed and has a nice look from the side. His pedigree traces back to an excellent cow family and he offers sure-fire calving ease.

49 PAR O'REILLY FACTOR 7P63

DOB: 01/30/17 REG: 18979234 TAG: 157 TATTOO: 7P63


S A V FINAL ANSWER 0035
 VIN-MAR O'REILLY FACTOR
 VIN-MAR EDELLA 2827

 CONNEALY LEAD ON
 PAR JO SUE LEAD ON 739-157
 PAR JO SUE 534 878-739

CED	BW	WW	YW	SC	Milk	\$EN	Marb	RE	\$W	\$B
7	0.9	52	97	0.42	28	-8.68	0.39	0.49	56.34	123.28

CALVING EASE Lots of performance in this athletic, big ribbed, stylish bull. His Lead On pathfinder dam just never seems to miss. Take a look at his adjusted growth weights and nice moderate birth weight.

51 PAR O'REILLY FACTOR 7P77

DOB: 02/15/17 REG: 18979240 TAG: 713 TATTOO: 7P77


S A V FINAL ANSWER 0035
 VIN-MAR O'REILLY FACTOR
 VIN-MAR EDELLA 2827

 NORTHERN IMPROVEMENT 4480 GF
 PAR TAYLOR BLACKMAID-542-713
 H SUSAN BLACKMAID 95

CED	BW	WW	YW	SC	Milk	\$EN	Marb	RE	\$W	\$B
2	1.9	48	93	0.53	31	-16.5	0.26	0.50	46.68	139.37

This is an athletic, long bodied, nice fronted O'Reilly Factor son out of a pathfinder Northern Improvement dam. She seems to raise a growthy bull every single year.

50 PAR O'REILLY FACTOR-7P81

DOB: 02/23/17 REG: 18979242 TAG: 338 TATTOO: 7P81


S A V FINAL ANSWER 0035
 VIN-MAR O'REILLY FACTOR
 VIN-MAR EDELLA 2827

 CONNEALY FRONT PAGE 0228
 PAR PATSY 937-FP-338
 PAR PATSY -560-NW-937

CED	BW	WW	YW	SC	Milk	\$EN	Marb	RE	\$W	\$B
2	3.2	60	107	0.46	28	-17.56	0.32	0.34	53.17	119.60

This O'Reilly Factor son is out of a good pathfinder Front Page dam. He is big bodied, stout and athletically made. Lots of performance in this bull.

52 PAR O'REILLY FACTOR-7P38

DOB: 01/20/17 REG: 18979214 TAG: 824 TATTOO: 7P38

S A V FINAL ANSWER 0035
 VIN-MAR O'REILLY FACTOR
 VIN-MAR EDELLA 2827

 H S A F BANDO 1961
 PAR LADY ESTON 227-1961-824
 PAR LADY ESTON VRD 227

CED	BW	WW	YW	SC	Milk	\$EN	Marb	RE	\$W	\$B
8	0.5	53	96	0.58	26	-11.09	0.28	0.44	51.56	121.92

CALVING EASE This is a big ribbed, easy keeping, sound made bull. He offers outstanding growth in a calving ease package along with a nice adjusted yearling number and REA.



SAC Conversation

REF SIRE SAC CONVERSATION

DOB: 11/12/2013 REG: 17808532 TAG: JS02 TATTOO: JS02

Act BW 76
Adj WW 888
Adj YW 1502

BT CROSSOVER 758N
SILVEIRAS CONVERSION 8064
EXG SARAS DREAM S609 R3
SAV 004 PREDOMINANT 4438
LAFLINS FARRAH 0252
LAFLINS FARRAH 7215

CED	BW	WW	YW	SC	Milk	\$EN	Marb	RE	\$W	\$B
3	+1.5	42	80	1.44	28	-3.18	0.48	0.78	45.12	103.24

Conversation is as solid as any sire in terms of his EPD line-up, but it is his phenotype that is the most exciting. Not only does he balance up well from the side, but he is also a rugged built bull with real skeletal width and muscle.



LOT 53

53 PAR CONVERSATION 7P32

DOB: 01/19/17 REG: 18979209 TAG: 435 TATTOO: 7P32

Act BW 71
Adj WW 649
Adj YW 1155

SILVEIRAS CONVERSION 8064
SAC CONVERSATION
LAFLINS FARRAH 0252
TC FRANKLIN 619
PAR PATSY115-TCF-435
PAR PATSY NPV 937-115

CED	BW	WW	YW	SC	Milk	\$EN	Marb	RE	\$W	\$B
12	-1.6	46	81	0.88	28	-7.38	0.55	0.46	51.94	102.97

CALVING EASE This is a moderate framed Conversation son with plenty of rib and thickness. He offers functional growth and sure-fire calving ease.

54 PAR CONVERSATION-7P82

DOB: 02/24/17 REG: 18979243 TAG: 322 TATTOO: 7P82

Act BW 83
Adj WW 685
Adj YW 1179

SILVEIRAS CONVERSION 8064
SAC CONVERSATION
LAFLINS FARRAH 0252
CONNEALY FINAL PRODUCT
PAR JO SUE 157-FNLP-322
PAR JO SUE LEAD ON 739-157

CED	BW	WW	YW	SC	Milk	\$EN	Marb	RE	\$W	\$B
5	0.8	53	94	1.11	28	-12.19	0.45	0.56	54.54	108.42

CALVING EASE This is an easy keeping, moderate framed Conversation son that gives you a nice look from the side. His dam comes from an outstanding pathfinder cow family.

Our Philosophy-

When Parry Angus began, we knew we had to have a goal for our breeding program. What was our vision for the herd? The conclusion we came to is "balance". These bulls are bred to carry a balance of traits. Many producers will attempt to chase the latest trend in the industry or single trait select to achieve a goal in their herd. But usually this comes at the expense of other traits that make up the "balance" or completeness of cattle that allows them to excel. Truly great cattle will have all of the pieces needed to be exceptional. This is how we approach our breeding program. We breed our cows with the intention of producing great females. After all, females are the base of our herd and every set of bulls that we produce every year. Without great females, Parry Angus would cease to exist. Because we breed for great females with balance in mind, we also get bulls with a balance of traits. That gives them the flexibility to meet the need of nearly any producer. We believe the phenotype and genetics behind these cattle gives them the unique ability to not only offer you value-added traits such as carcass merit, but also functional traits such as muscle, growth, fleshing ability, disposition, and strong maternal characteristics.



2017 bulls being inspected before the sale.

Sim-Angus Bulls-

This is our fifth year offering Sim-Angus Bulls. The idea came to us after a few long-time customers explained that they have been using Angus bulls for a long time and wanted to cross out. Well, you can't blame a producer for wanting to take advantage of heterosis and get that extra bump in growth and performance. That means more pounds on sale day and a bigger paycheck. Consequently, we searched for an answer that would offer our customers a unique cross to take advantage of additional growth and muscle while maintaining the traits that make the Angus breed so popular. Our Sim-Angus program was born. Our Simmental cross bulls are the ideal blend of maternal, carcass merit and calving ease of the Angus breed along with the added growth, performance, and muscle of the Simmental breed. Our goal is to produce Sim-Angus bulls out of proven Simmental sires that maintain moderate frame and calving ease, but that will perform in any condition.

THE CHART BELOW IS TO CONVERT SIMMENTAL EPD'S TO ANGUS EPD'S

TO CONVERT FROM SIMMENTAL TO ANGUS:

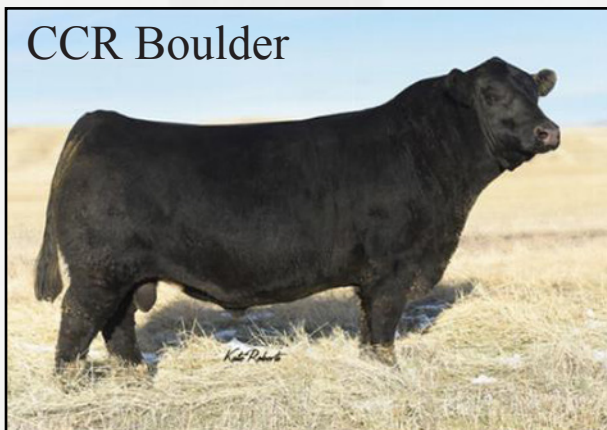
BW	ADD 3.4 POUNDS TO SIMMENTAL EPD
WW	SUBTRACT 6.4 POUNDS FROM SIMMENTAL EPD
MM	ADD 0.5 POUNDS TO SIMMENTAL EPD
YW	SUBTRACT 13.6 POUNDS FROM SIMMENTAL EPD

MARB	SUBTRACT 0.41 % FROM SIMMENTAL EPD
REA	ADD 0.46 SQUARE INCHES TO SIMMENTAL EPD
FAT	SUBTRACT 0.149 INCHES FROM SIMMENTAL EPD

WHEN YOU USE THIS CHART, THE FINAL NUMBER WILL BE THE EQUIVALENT OF AN ANGUS EPD

DO THE SAME OPERATION IN REVERSE (I.E. ADD INSTEAD OF SUBTRACT) TO CONVERT FROM ANGUS TO SIMMENTAL

CCR Boulder



REF CCR BOULDER 1339A SIRE

DOB: 8/31/2013 REG: 2880390 TAG: 1339A TATTOO: 1339A

SYDGEN CC & 7

HOOVER DAM

Act BW 55
Adj WW 699
Adj YW 1204

ERICA OF ELLSTON C124

TRIPLE C L. TAYLOR

CCR MS L TAYLOR 1339Y

CCR 0135 STAR 7103T

CED	BW	WW	YW	Doc	Milk	Stay	Marb	RE	API	TI
20.0	-3.4	56.1	96.6	14.1	26.8	15.0	0.94	0.76	188.0	89.0

Homozygous Black, Homozygous Polled. 50% Angus. Boulder is a moderate framed, big ribbed stud with loads of muscle and shape. He sires calving ease and progeny display his good looks and deep flank.



LOT 55

55 PARS BOULDER E7P68

DOB: 02/03/17 REG: 3335390 TAG: Z214 TATTOO: E7P68

HOOVER DAM

CCR BOULDER 1339A

CCR MS L TAYLOR 1339Y

Act BW	85
Adj WW	658
Adj YW	1208



CLO LTS ENTOURAGE 72T

PARS BLKBIRD 726-Z214

STULL MISS BLACKBIRD 726

1/2 Simmental, 1/2 Angus

CED	BW	WW	YW	Milk	CW	BF	Marb	RE	API	TI
19.5	-3.6	53.3	84.7	23.6	15.4	-0.032	0.56	0.82	158.1	77.1

This is a big ribbed, big hipped Boulder son with style and eye appeal to spare. He scanned a 14.8 REA, posts excellent growth numbers and is about as close to calving ease as it gets. He is my favorite of the Sim-Angus bulls.

MCM Top Grade



REF SIRE MCM TOP GRADE

DOB: 3/11/2010 REG: 2540315 TAG: 018X TATTOO: 018X

Act BW 77
Adj WW 720
Adj YW 1216ELLINGSON LEGACY M229
MR NLC UPGRADE U8676
MS NLC MOJO S6119 B
MCM MARBLER 307N
MCM 513R
MCM 210M

CED	BW	WW	YW	Doc	Milk	Stay	Marb	RE	API	TI
8.2	-0.9	57.9	94.8	10.2	26.3	7.0	0.66	1.11	137.5	78.1

Homozygous Black, Homozygous Polled. 1/4 Angus. Top Grade is moderate in his birth weight and calving ease, but with excellent growth and top ranking carcass merit traits. He is known for the extra eye appeal he will add to his progeny.



LOT 56

56 PARS TOPGRADE E7P52

DOB: 01/26/17 REG: 3335389 TAG: Z213 TATTOO: E7P52

Act BW 94
Adj WW 727
Adj YW 1311MR NLC UPGRADE U8676
MCM TOP GRADE 018X
MCM 513RHOOKS PACESETTER 8P
PARS LADY ESTON-8P-Z213
PAR LADY ESTON 227-1961-824

5/8 Simmental, 3/8 Angus

CED	BW	WW	YW	Milk	CW	BF	Marb	RE	API	TI
9.5	0.1	59.0	96.5	27.2	27.9	-0.057	0.44	0.86	126.9	72.7

This is a big topped, big hipped bull with lots of bone and a big foot. He exhibits excellent structure with tons of growth and is out of a fantastic Pacesetter dam.

57 PARS TOPGRADE E7P84

DOB: 02/26/17 REG: 3335391 TAG: Z247 TATTOO: E7P84

Act BW 101
Adj WW 747
Adj YW 1275MR NLC UPGRADE U8676
MCM TOP GRADE 018X
MCM 513RHOOKS PACESETTER 8P
PARS SUZAN 231-8P-Z247
PAR FAME SUSAN 231

5/8 Simmental, 3/8 Angus

CED	BW	WW	YW	Milk	CW	BF	Marb	RE	API	TI
8.8	1.3	60.8	97.2	23.3	30.1	-0.048	0.43	0.84	122.8	71.0

This is a big ribbed, muscular, meat and potatoes bull with a load of growth. His Pacesetter dam gets it done each year.

58 PARS O' FACTOR E7P03

DOB: 01/06/17 REG: 3335385 TAG: C545 TATTOO: E7P03

Act BW 85
Adj WW 680
Adj YW 1197S A V FINAL ANSWER 0035
VIN-MAR O'REILLY FACTOR
VIN-MAR EDELLA 2827SS EBONYS GRANDMASTER
PARS PATSY Z254-GM-C545
PARS PATSY 560-72T-Z254

3/8 Simmental, 5/8 Angus

CED	BW	WW	YW	Milk	CW	BF	Marb	RE	API	TI
15.1	-1.7	56.2	96.8	24.4	25.7	0.028	0.40	0.57	131.3	68.5

This is a high performing, athletic, attractive O'Reilly Factor son. He has a nice moderate birth weight with plenty of growth.

59 PARS O' FACTOR E7P15

DOB: 01/14/17 REG: 3335386 TAG: C574 TATTOO: E7P15

Act BW 74
Adj WW 654
Adj YW 1187S A V FINAL ANSWER 0035
VIN-MAR O'REILLY FACTOR
VIN-MAR EDELLA 2827IR RANGE BOSS Y623
PARS BLACK A339-RB-C574
PARS SUZIBLK342 779 A339

1/4 Simmental, 3/4 Angus

CED	BW	WW	YW	Milk	CW	BF	Marb	RE	API	TI
17.8	-3.5	55.6	98.5	26.6	24.3	0.035	0.48	0.47	146.5	72.7

This is a bull with lots of rib shape and muscle with plenty of balance. He is an O'Reilly Factor out of a good Range Boss dam. He is about as close as it comes to calving ease in a Sim-Angus package.

60 PARS YELLOWSTONE E7P66

DOB: 02/03/17 REG: 3335387 TAG: Y161 TATTOO: E7P66

Act BW 108
Adj WW 807
Adj YW 1351HOOKS TAURUS 24T
HOOKS YELLOWSTONE 97Y
HOOKS SHEYENNE 77SCNS DREAM ON L186
PARS DREAM GIRL 36F-161
SCHMAUS EXAMPLE 36F

3/4 Simmental, 1/4 Angus

CED	BW	WW	YW	Milk	CW	BF	Marb	RE	API	TI
14.8	0.4	64.3	95.7	22.3	27.4	-0.038	0.35	0.66	139.5	72.4

This Yellowstone son is pure power. Lots of bone, muscle and performance in this bull. His Dream On dam produced an \$8500 bull that sold to Jimmy Mitchell in our 2015 sale. If you are looking to add pounds to your calf crop, here it is.

61 PARS INTEGRATE E7P22

DOB: 01/17/17 REG: 3335382 TAG: B468 TATTOO: E7P22

MR NLC UPGRADE U8676

GLS INTEGRATE Z3

GLS MISS BTE W149

Act BW	83
Adj WW	669
Adj YW	1170



PAR MAINLINE-1P01

PARS BLKB Z214-1P01-B468

PARS BLKBIRD 726-Z214

1/2 Simmental, 1/2 Angus

CED	BW	WW	YW	Milk	CW	BF	Marb	RE	API	TI
16.4	-2.6	68.8	117.6	22.5	36.5	-0.038	0.26	0.81	133.5	77.7

This Integrate son is very expressive in his muscle pattern and has lots of growth and rib shape. He is a nice moderate package with an easy to work with birth weight.



Dalton and Ryan working bulls



TWO YEAR OLD BULLS

62 PAR TOUR OF DUTY-6P69

DOB: 01/26/16 REG: 18621885 TAG: 824 TATTOO: 6P69

WERNER WAR PARTY 2417

R B TOUR OF DUTY 177

B A LADY 6807 305

Act BW	86
Adj WW	589
Adj YW	1141



H S A F BANDO 1961

PAR LADY ESTON 227-1961-824

PAR LADY ESTON VRD 227

CED	BW	WW	YW	SC	Milk	\$EN	Marb	RE	\$W	\$B
3	3.2	60	106	1.32	30	-17.91	0.42	0.84	57.33	150.16

This is a very attractive bull with just enough muscle and performance and a great disposition. He scanned a 14.4 inch REA.

63 PAR CAPITALIST-6P81

DOB: 02/01/16 REG: 18621893 TAG: 935 TATTOO: 6P81

S A V FINAL ANSWER 0035

CONNEALY CAPITALIST 028

PRIDES PITA OF CONANGA 8821

Act BW	102
Adj WW	673
Adj YW	1110



MYTTY IN FOCUS

PAR LUCKY GIRL-513-MIF

PAR BARB'S LUCKY GIRL-NI-513

CED	BW	WW	YW	SC	Milk	\$EN	Marb	RE	\$W	\$B
10	1.3	60	91	1.61	26	-6.8	0.58	0.16	65.44	105.12

This is a more moderate framed, muscular Capitalist son out of a pathfinder Mytty In Focus dam with a WR of 6/109.

64 PAR TEN X -6P28

DOB: 01/12/16 REG: 18621861 TAG: 201 TATTOO: 6P28

MYTTY IN FOCUS

A A R TEN X 7008 S A

A A R LADY KELTON 5551

Act BW	67
Adj WW	572
Adj YW	1111



S A V IRON MOUNTAIN 8066

PAR S BLACKMAID 806- IM-201

PAR S BLACKMAID-705-NI-806

CED	BW	WW	YW	SC	Milk	\$EN	Marb	RE	\$W	\$B
12	-0.3	62	102	0.27	19	-2.31	0.29	0.32	59.28	102.21

CALVING EASE This is a long bodied, muscular 10X son out of a powerful cow family that goes back to the PAR Blackmaid 705 donor dam.

65 PAR CAPITALIST-6P92

DOB: 02/16/16 REG: 18632009 TAG: 239 TATTOO: 6P92

S A V FINAL ANSWER 0035

CONNEALY CAPITALIST 028

PRIDES PITA OF CONANGA 8821

Act BW	88
Adj WW	667
Adj YW	1144



S A V IRON MOUNTAIN 8066

PAR SUSAN BLK 343-IRON M-239

PAR SUSAN BLACKMAID-NI- 343

CED	BW	WW	YW	SC	Milk	\$EN	Marb	RE	\$W	\$B
7	1.8	59	91	-0.24	19	3.03	0.48	0.21	56.16	90.88

This is a stout made, well-put-together kind of Capitalist son out of a really good pathfinder Iron Mountain dam.



Thanks for attending our sale. Whether you have come to invest in our genetics or are just looking for next time, we appreciate your support.



PARRY & ANGUS

STEVE AND RYAN PARRY
21998 CR 46
STERLING, CO 80751
(970) 522-1214

FIRST-CLASS MAIL
U.S. POSTAGE PAID
LivestockDirect
66030

20TH ANNUAL
"Lotta Bull Sale"

MONDAY, MARCH 12, 2018 1:00 MDT
AT THE RANCH - 9 MI NORTH OF STERLING, CO



CATALOG PRINTED BY:



CATALOG DESIGNED BY:



REMEMBER TO VISIT www.parryangus.com TO SEE UPDATED
INFORMATION AND VIDEO OF THE BULLS